

Chameleon Harmonica Workwall



- Specifications -

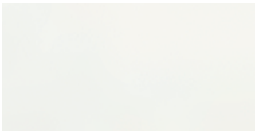
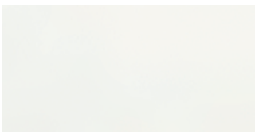
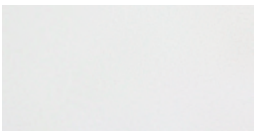
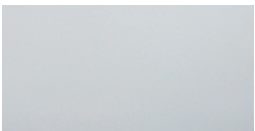





General

Description	Size	Surface	Nett weight
3-pc frame	3540 x 2015 mm (BxH)	-	± 65 kg
Writing surface	1180 x 1950 mm (BxH)	Enamel surface of choice	± 26 kg
Acoustic pinnig surface	1180 x 1950 mm (BxH)	PET-Felt, colour of choice	± 9,8 kg

Surfaces

Enamel

Material type	Application	Advantages	Miniature
White enamel	Ideal for writing	Top-quality writing surface for whiteboards	
Extra Hygienic Enamel	Ideal for writing in rooms that need an advanced level of hygiene	Top-quality writing surface for whiteboards. Designed to eliminate 99% of bacteria and viruses (including COVID-19) within 24 hours.	
Mica white (enamel)	Ideal for projection	Ideal properties for projection without reflection. Wet erase with spray.	
Hybrid (enamel)	Suitable for writing and projection	A good compromise for writing and projecting on the same surface.	
Chalk grey (enamel)	Using chalks	There is no better base material for chalk boards than this enamelled steel.	
Chalk green (enamel)	Using chalks	There is no better base material for chalk boards than this enamelled steel.	
Sublimation steel	Printed whiteboard	Ideal combining the best full-colour images with writing application.	

Surfaces

PET-Felt

Grey Tones

Stock colours



AP/9-12
Silver grey



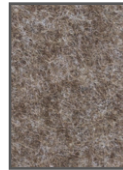
AP/9-16
Grey



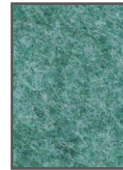
AP/9-03
Antraciet



AP/9-22
Dark Camel



AP/9-39
Light Oak



AP/9-19
Green



AP/9-14
Light Blue

Nature

Stock colours

Monochrome



AP/9-20
White



AP/9-32
Off White



AP/9-23
Dark Grey



AP/9-09
Black



AP/9-27
Middle Blue



AP/9-01
Dark Blue



AP/9-51
Apple Green



AP/9-05
Yellow



AP/9-56
Orange



AP/9-25
Red



AP/9-41
Purple

Technical

Whiteboard panels

Charastaristics:

- Magnetic and dry erasable
- Suitable for intensive and permanent use

Thickness:

7 mm

Warranty:

2 years

Surface warranty:

Lifetime warranty on writability and dry erasability

Warranty sublima - ted steel surface

2 years

Technical

PET-Felt panels

Charastaristics:

- Acoustic
- Pin-able and magnetic for glass board magnets

Thickness:

9 mm

Acoustic values:

aw 0,25 | NRC 0,30 | Class D

Flammability:

Tested to EN 13501-1:2007 + A1:2009

Density PET-felt:

210 kg/ m³

Warranty:

2 years

Construction

Enamel whiteboard panel

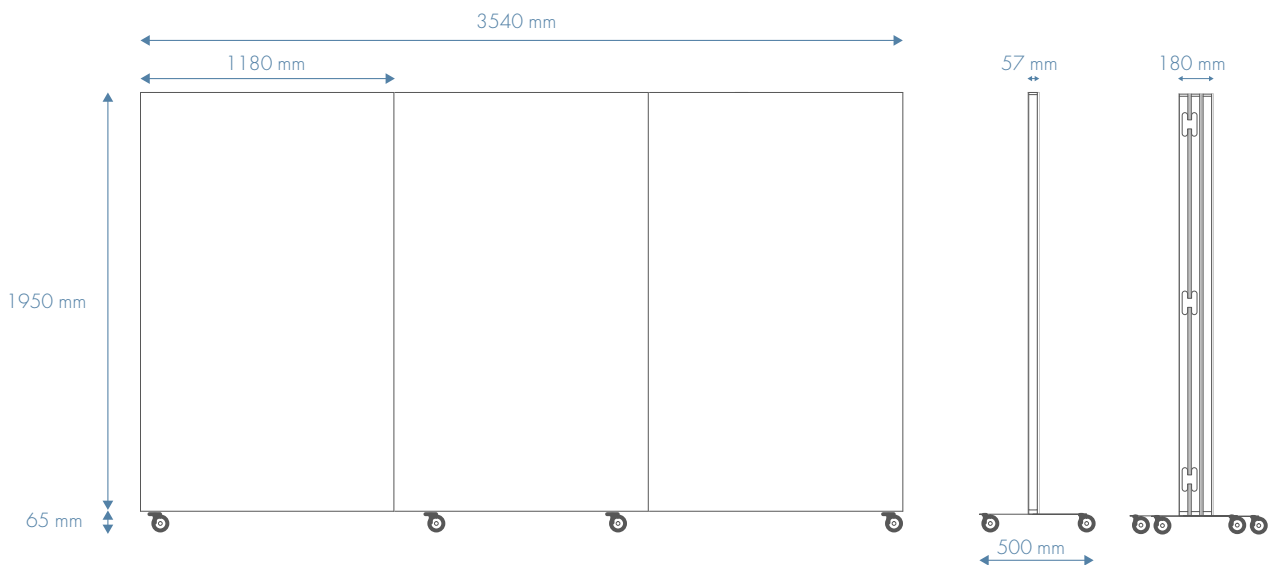
1. Surface	[colour] enamel steel (Indoor Air Quality Certified to SCS-EC10.3-2014 v4.0) / sublimated steel of 0,4 mm
2. Carrier	MDF 6 mm (FSC Mix Credit)
3. Backing	0,4 mm galvanised steel sheet
4. Finishing	Black lacquered edges

PET-Felt panel

1. Surface	PET-Felt panel, 9 mm thick 60% recycled PET bottles, 40% new polyester fibre
2. Backing	0,4 mm galvanised steel sheet

Moveable frame

Frame	<ul style="list-style-type: none"> • Pine wood outer frame, black lacquered • Poplar wood inner frame, without lacquer • 6 robust hinges
Feet	Black powder coated steel
Wheels	6 robust black castor wheels, 3 with brake
Magnetic strips for mounting panels	14 pieces
Magnetic plates for mounting panels	8 pieces



The mark of
responsible forestry
FSC® C137061

